

EH Series

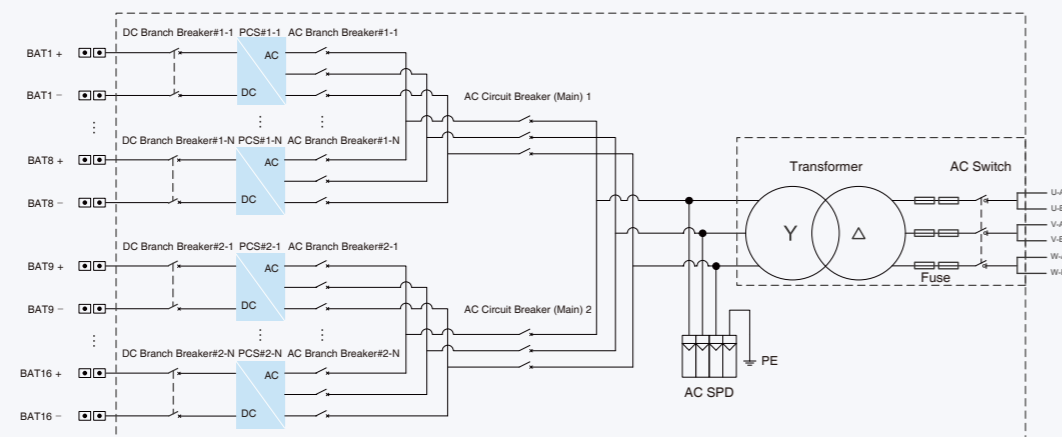
Turnkey Station With MV Transformer Integrated (String PCS, 1500V)



Features

- 200 kW fold expansion up to 3.6MW inside 20 ft structure
- Power Module easily replacement reduce repair time
- Only need to power off each single failed battery cluster
- Allow expand new battery cluster to the old system
- Solve SOC imbalance between different battery clusters
- Battery system achieve more deep DOD ability
- Built in Energy Management Unit support IEEE 2030.5
- More easily to perform periodic battery calibration

Circuit Diagram



Model	EH-2400-HA-MR-US-34.5	EH-3200-HA-MR-US-34.5
DC Parameters		
Max. DC Voltage	1500V	1500V
Max. DC Current	224.5A*12	224.5A*16
Battery voltage range	1000 ~ 1500V	1000 ~ 1500V
Number of DC inputs	12	16
AC parameters (On-Grid)		
AC output power	220kVA*12@35 C, 200kVA*12@45 C, 133kVA*12@50 C	220kVA*16@35 C, 200kVA*16@45 C, 133kVA*16@50 C
PCS AC voltage range	607~759V (Adjustable)	607~759V (Adjustable)
PCS Max. AC output current	184.1A*12@35 C, 167.4A*12@45 C, 111.3A*12@50 C	184.1A*16@35 C, 167.4A*16@45 C, 111.3A*16@50 C
Nominal grid frequency	60Hz	
Harmonic (THDi)	<1.5% (100% load)	
Power Factor	-1 ~ +1	
AC parameters (Off-Grid)		
PCS Nominal AC voltage	690V, 3W+PE	
PCS AC voltage range	607~759V (Adjustable)	
AC voltage distortion	<1.5% (100% linear load)	
DC voltage component	<0.5% Un (Linear balance load)	
Unbalanced load capacity	100%	
Nominal grid frequency	60Hz	
Transformer		
Isolation mode	Oil-Immersed Transformer	Oil-Immersed Transformer
Transformer rated power	2400kVA	3200kVA
Transformer Max. power	2400kVA	3200kVA
LV/MV voltage	0.69kV/34.5kV (11.8kV~34.5kV Optional)	
Transformer vector	Dy1 or Dy11	
Transformer cooling type	ONAN (KNAN Optional)	
Oil type	Mineral oil (PCB free) or degradable oil on request	
General Data		
PCS Max. efficiency	98.80%	
PCS CEC efficiency	98.50%	
Ingress protection rating	TYPE 3R	
Operating temperature range	-40~+60 C (>45 C derating)	
Relative humidity	0~100% (no condensing)	
Max. altitude	2000m	
Cooling method	Forced air cooling	
Communication port	RS485/CAN/Ethernet	
Dimensions (W*D*H)	6058*2438*2896mm	
Weight	15000kg	16000kg